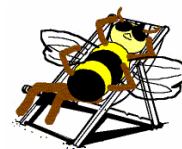


Section 6: Musicals and Musical Plays

Part 2: Musicals and Musical Plays

(Page 1) With Sheet Music For Some Songs



The quoted run-times are a guideline only; so much depends on an individual production.

Acting Funny

Author Jack Burgess

Roles Minimum Male roles = 4. Minimum Female roles = 2. Minimum total with doubling = 7. Minimum total without doubling = 52. Chorus.

Runtime Around 90 minutes.

Music Piano and vocal scores for the opening and closing songs are supplied with the Producer's copy of the script. (Original lyrics, music by Sir Arthur Sullivan)

Style A revue - a set of 17 comedy sketches and songs, varying in length from one to ten minutes. Basically a family show, but includes mild swearing in a few of the sketches.

Outline A collection of sketches, including opening and closing songs, five Great Moments from History, two French Lessons, three monologues, a very small circus, the ante-rooms to the after-life, a spoof of a medical soap opera, a martial arts demonstration and the Dead Carrot sketch. [Note that some of the longer sketches are also available individually.]

It's A Funny Old World

Author Bill Tordoff

Roles Minimum Male roles = 10. Minimum Female roles = 10. Minimum total with doubling = 20. Minimum total without doubling = 20. No chorus.

Runtime Around 30 minutes.

Music Sheet music to one song is provided with the Producer's Copy of the Script. (The tune is 'John Brown's Body' - or 'The Battle Hymn of the Republic' if you prefer.)

Style One-act youth comedy play. Single set (though a cricket pavillion on Neptune is a rather bizarre location).

Outline A group of ladies from 1913 are marooned on Neptune. How did they get there, and why are they still alive? Two crews from competing nations arrive to try and puzzle out the mystery, but they need to know what happened to the other missions first...

Maid in China

Author Philippa Smith

Roles Minimum Male roles = 3. Minimum Female roles = 6. Minimum total with doubling = 25. Minimum total without doubling = 27. Chorus.

Runtime Around 90 minutes.

Music Sheet music for the prologue song is provided with the Producer's Copy of the script. Other songs may be added at the discretion of the production team.

Style Full-length comedy play for children (or a mixed company of adults and kids) based on the Willow Pattern story.

Outline Henry Hopper is not the least bit interested in China plates and their history. But when a cursed plate in a museum transports him to ancient China, he soon finds himself caught up in the mystery of two missing bluebirds, a pair of secret lovers, and the role they play in the Willow Pattern...

Plus The following additional items are available (at extra cost) to go with this script: ** A set of MP3 files with piano arrangements of all the songs from the show

Moving With The Times

Author Jennifer Garthwright

Roles Minimum Male roles = 6. Minimum Female roles = 5. Minimum total with doubling = 14. Minimum total without doubling = 19. No chorus.

Runtime Around 105 minutes.

Music Sheet music for one song (suggested for one of the Music Hall Turns) is supplied with the Producer's Copy of the script.

Style Large cast family comedy play, set backstage in a 1900 Music Hall, alternating with the Turns on the Music Hall stage. The script includes seven optional Turns, including a short one-act Melodrama. (Other Turns can be substituted by the producer.)

Outline Back stage at Mr. Harding's Music Hall all is in turmoil - ticket receipts are down as the company is threatened by the popularity of the Moving Picture House next door, Madam Harding, the star of the show, has lost her nerve, someone has blocked the chimney, causing the wings to fill with smoke, and the lowly stage hand is definitely not what he seems to be. Even so, the show must go on, and the back stage drama alternates with the Music Hall turns on the stage.

Section 6: Musicals and Musical Plays

Part 2: Musicals and Musical Plays

(Page 2) With Sheet Music For Some Songs



Poisoned Present for Princess

Author Cynthia Medley and Marian Wood Chaplin

Roles Minimum Male roles = 12. Minimum Female roles = 10. Minimum total with doubling = 24. Minimum total without doubling = 25. Chorus.

Runtime Around 65 minutes.

Music Piano and vocal scores for 15 original songs are supplied with the Producer's copy of the script.

Style Children's musical, based on an Oscar Wilde story.

Outline On the Princess Margarita's 12th birthday, her uncle plots to poison her and the King in an attempt to claim the throne for himself. A dwarf, booked as an entertainer at the Princess's birthday party, overhears his plan and tries to warn the princess. But will he get to her in time?

Plus The following additional items are available (at extra cost) to go with this script: ** A 'rehearsal CD' with piano arrangements of all the songs from the show

Rapunzel

Author Philippa Smith

Roles Minimum Male roles = 6. Minimum Female roles = 4. Minimum total with doubling = 20. Minimum total without doubling = 18. Chorus.

Runtime Around 120 minutes.

Music Sheet music for four songs is supplied with the Producer's copy of the script. Other songs and dances may be added at the discretion of the Producer.

Style Full-cast family show (an alternative to British Pantomime).

Outline The classic tale of the long-haired lass retold with additional ghosts, dogs, magical folk and hobgoblins!

Tap Tap

Author Bill Tordoff

Roles Minimum Male roles = 6. Minimum Female roles = 8. Minimum total with doubling = 14. Minimum total without doubling = 28. No chorus.

Runtime Around 45 minutes.

Music Sheet music for one song (new lyrics, familiar tune!) is provided with the Producer's Copy of the script.

Style Play for kids with music (one song). Single set - a Youth Hostel common room (and since Youth Hostels come in a variety of shapes, this gives a lot of freedom!)

Outline A group of school children and their teachers find themselves in a Youth Hostel without beds due to a booking error. Is their fundraising trip finished before it begins? Luckily, sharing space with a group of old folks leads to more than just community spirit.

The Best in the Book

Author Bill Tordoff

Roles Minimum Male roles = 4. Minimum Female roles = 4. Minimum total with doubling = 26. Minimum total without doubling = 29. Chorus.

Runtime Around 40 minutes.

Music The Producer's copy of the script includes sheet music for three original songs. A number of traditional carols are also suggested in the script.

Style Irreverent, humorous nativity play. Simple sets.

Outline A humorous nativity story, with pantomime camels, talkative sheep, Queens as well as kings and lots of angels. The shepherds really don't like their job and spend the cold winter's night in drinking too much! They are very alarmed when angels appear. Meanwhile, one of the kings' camels develops a puncture...

Section 6: Musicals and Musical Plays

Part 2: Musicals and Musical Plays

(Page 3) With Sheet Music For Some Songs



The Spirit of Christmas

Author Annette Cameron

Roles Minimum Male roles = 4. Minimum Female roles = 4. Minimum total with doubling = 10. Minimum total without doubling = 35. Chorus.

Runtime Around 30 minutes.

Music Sheet music for one original song is supplied with the Producer's Copy of the script, together with a list of other suggested songs and music.

Style One act play with music for young children. (A secular Christmas play!)

Outline It's close to Christmas, but Santa has lost his Christmas Spirit. Can Mrs Claus and the Elves find it in the huge Workshop before it's too late?

Witchwood

Author Mark Rudd

Roles Minimum Male roles = 10. Minimum Female roles = 15. Minimum total with doubling = 26. Minimum total without doubling = 31. No chorus.

Runtime Around 85 minutes.

Music The Producer's Copy of the script comes with suggestions for seven songs plus a simple piano score for an overture.

Style Darkly comic fantasy for a (mixed-age) company of kids. A world of goblins, elves and talking trees.

Outline *Would you go down to the woods today?*

Hannah is trying to evade some bullies when she runs into the Wood and finds she can't get out. Befriended by a woodcutting Goblin and pursued by witches, Hannah has to cope with some very trying times before she can find her way home.
I talk to the trees *and in this case, they answer!*