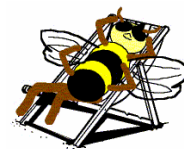


# Section 6: Musicals and Musical Plays

## Part 5: Family Shows With Sheet Music For All Songs

### (Page 1)



The quoted run-times are a guideline only; so much depends on an individual production.

#### Frankenstein - The Monster Musical

*Author* George Douglas Lee

*Roles* Minimum Male roles = 9. Minimum Female roles = 6. Minimum total with doubling = 17. Minimum total without doubling = 19. Chorus.

*Runtime* Around 100 minutes.

*Music* The Producer's Copy of the script comes with piano/vocal scores for 13 original songs.

*Style* Gothic horror musical comedy!

*Outline* If Mary Shelley had written a version of Frankenstein for children, this is how she might have approached it - as a heartwarming family musical, filled with mad scientists, misbegotten creatures and an angry mob!  
On a rainy night when the power is out, a father tells his son the story of Frankenstein, and we are transported to Victor Frankenstein's Laboratory with Mary Shelly singing of the creation of the creature. We meet the creature, his bride and a croud of villagers, led by the rabble rouser Frau Gribble, whipped into a frenzy and go in search of 'the Monster'. Eventually, they come to realise that he was just misunderstood!

#### Hook and Peter Pan - How it all began

*Author* Giles Scott, Helen Dooley and Bob Walsh

*Roles* Minimum Male roles = 12. Minimum Female roles = 8. Minimum total with doubling = 20. Minimum total without doubling = 35. Chorus.

*Runtime* Around 90 minutes.

*Music* Piano and vocal scores for Overture and 15 songs by Helen Dooley and Bob Walsh are supplied with the Producer's Copy of the script.

*Style* Full-length musical which could be played by a youth company, by adults or by a mixture.  
The production notes include extensive explanations of how to fly!

*Outline* Everyone knows the story of Peter Pan. But how did the Boy Who Never Grew Up learn to fly? How did Hook lose his hand? How did the croc swallow the clock? This enchanting musical provides the answers!

*Plus* The following additional items are available (at extra cost) to go with this script: \*\* A 'backing track CD' with arrangements of all the songs from the show

#### Sherlock's Excellent Adventure

*Author* James Barry

*Roles* Minimum Male roles = 3. Minimum Female roles = 1. Minimum total with doubling = 4. Minimum total without doubling = 6. No chorus.

*Runtime* Around 90 minutes.

*Music* Sheet music for four original songs provided with the Producer's Copy of the Script.

*Style* Parody of Sherlock Holmes stories, visual jokes, theatrical jokes, wordplay. Not strictly a pantomime, but has some of the elements (including Mrs. Hudson as a pantomime dame) and could fit in a slot in the panto season.

*Outline* Lucy Matravers engages Holmes and Watson to resolve a dispute over a family will, bringing conflict with Holmes's arch enemy, Moriarty.

#### Three Musketeers

*Author* James Barry

*Roles* Minimum Male roles = 2. Minimum Female roles = 1. Minimum total with doubling = 3. Minimum total without doubling = 3. No chorus.

*Runtime* Around 90 minutes.

*Music* Sheet music for three original songs provided with the Producer's Copy of the Script.

*Style* Hilarious adventure with the Three Musketeers. Visual jokes, physical comedy, theatrical jokes, wordplay. (Not strictly pantomime, but contains many panto elements, so would be at home in a panto season or at any other time!)

*Outline* Cardinal Richelieu is trying to usurp the throne of France by stealing the crown jewels. In desperation, the Queen turns to the Athos, Porthos and Aramis. In retaliation, the Cardinal turns to his servant, Brie (played by an actor who turned up for a performance of Treasure Island) and the seductive Milady. Deception, mayhem, sword fights and hilarity ensue.